


TAMWORTH





CONSTRUCTION	LOOP
PILE FIBER COMPOSITION	100% Nylon (Polyamide 6)
YARN TYPE	BCF
DYE METHOD	Solution Dyed
PILE WEIGHT	630 g/m <sup>2</sup>
NUMBER OF TUFTS	209350/m <sup>2</sup>
TUFTING GAUGE	1/10"
PRIMARY BACKING	Non-Woven
SECONDARY BACKING	<b>StableShield</b> - 100% Vinyl
OPTIONAL BACKINGS	<b>Recova</b> -PU Cushion, <b>EcoShield</b> -100% Recycled Vinyl
TILE SIZE	50 cm x 50 cm
PILE HEIGHT	3.5 mm / 5.0 mm
TOTAL PILE HEIGHT	7.0 mm
PILE TREATMENT	INVISTA Anti-Soil Treatment, Anti-Microbial (Optional)
RECOMMENDED INSTALLATION	Quarter Turn or Brick

# SPECIFICATIONS

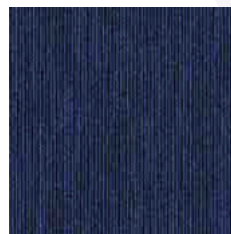
# COLOURLINE



TAMWORTH - 644



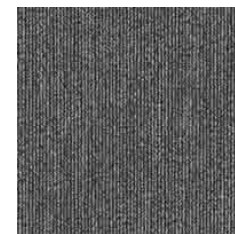
TAMWORTH - 650



TAMWORTH - 656



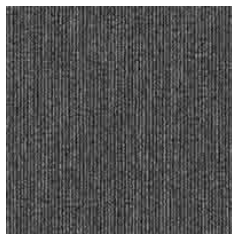
TAMWORTH - 658



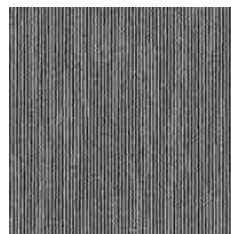
TAMWORTH - 670



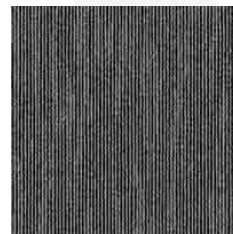
TAMWORTH - 671



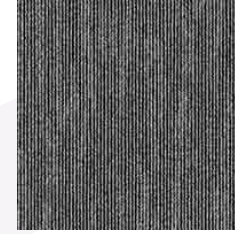
TAMWORTH - 673



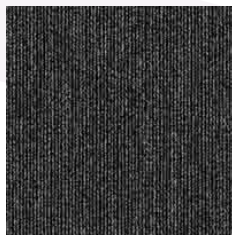
TAMWORTH - 675



TAMWORTH - 676



TAMWORTH - 677



TAMWORTH - 679



TAMWORTH - 692



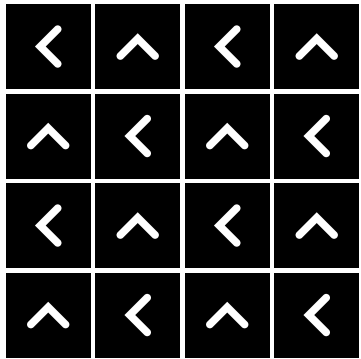
TAMWORTH - 693



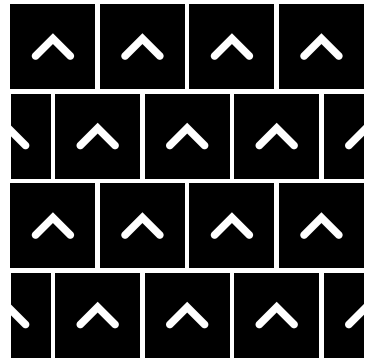


# HOW TO INSTALL

**QUARTER TURN**



**BRICK**





Standard  
*CARPETS*

[www.standardcarpets.com](http://www.standardcarpets.com)